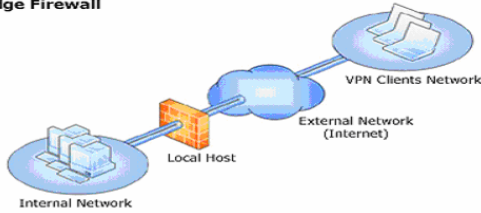


Environment

Windows 2000 Server
ISA 2004
Windows XP Home

Configured as an 'Edge Firewall' and assuming a rule is already in place to deal with standard internet traffic on TCP 80 & 443.

Edge Firewall



For this instance the following ports need to be configured for Marratech to communicate:
TCP 8000 – 8001
UDP 52000 – 52999

To do this:

Open 'ISA Server Management'

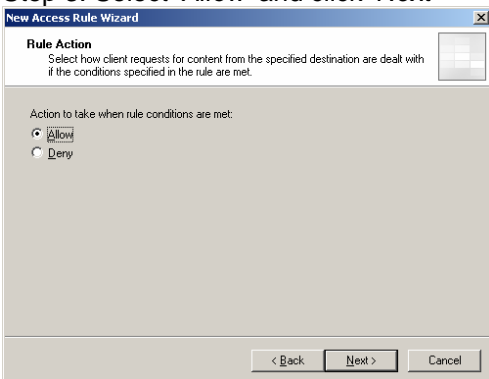
Select 'Firewall Policy' in the right hand pane.

Step 1: Select 'Create New Access Rule' from the Tasks Tab on the right hand side.

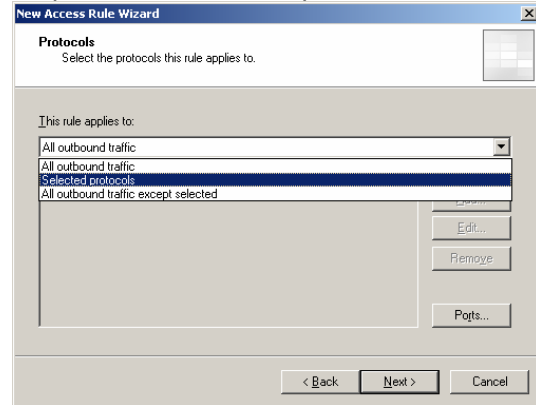
Step 2: Name your rule and click 'Next'



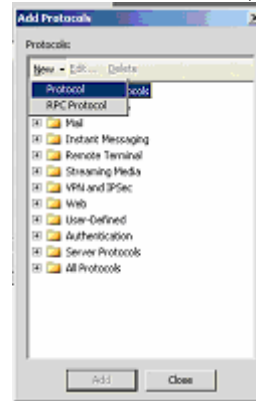
Step 3: Select 'Allow' and click 'Next'



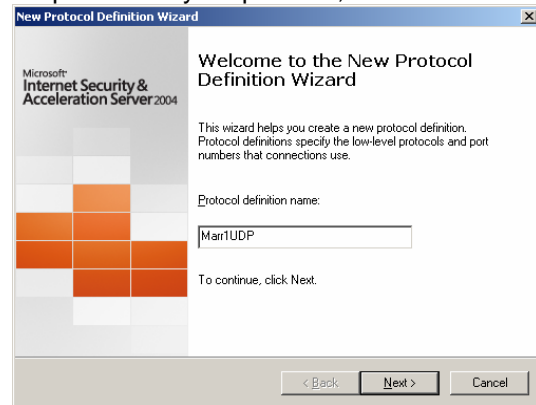
Step 4: Select 'Selected protocols', click 'Next'



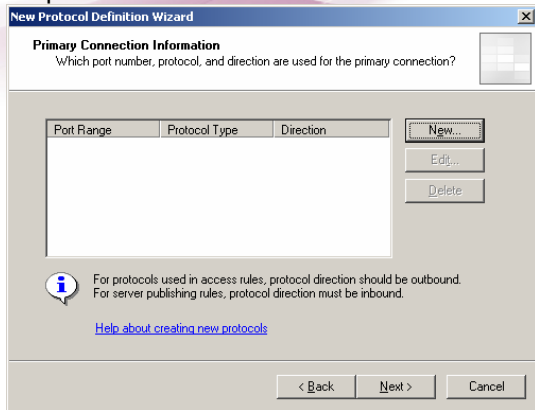
Step 5: Click 'Add' and the below box will appear. From the below box, select 'New', 'Protocol'



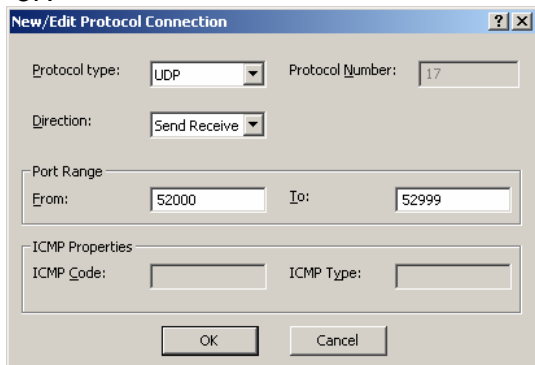
Step 6: Name your protocol, click 'Next'



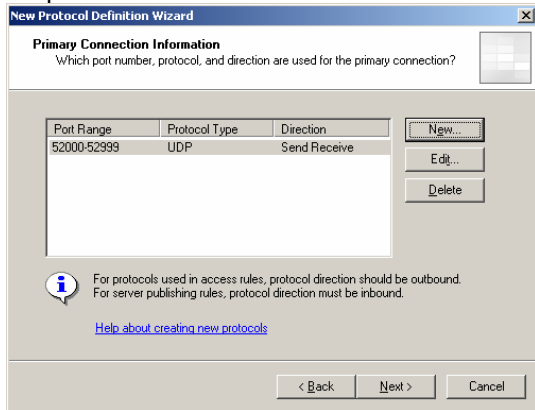
Step 7: Select 'New'



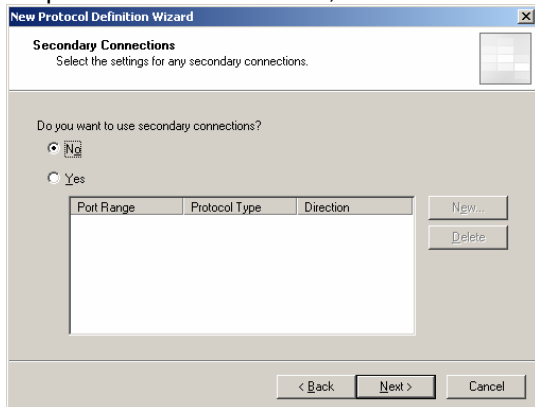
Step 8: Enter the below information, then select 'OK'



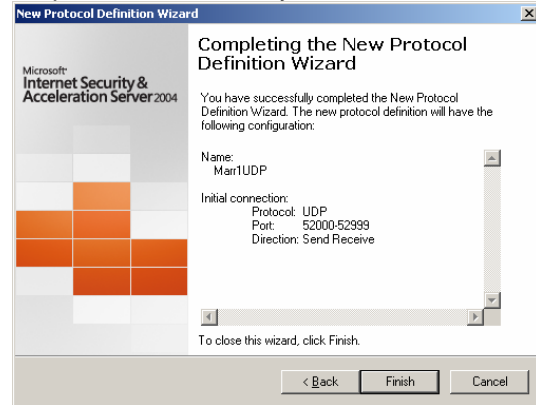
Step 9: Click 'Next'



Step 10: 'No' will be default, click 'Next'



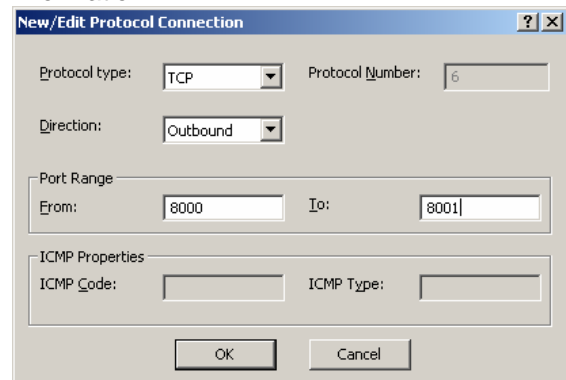
Step 11: Your summary should read like this:



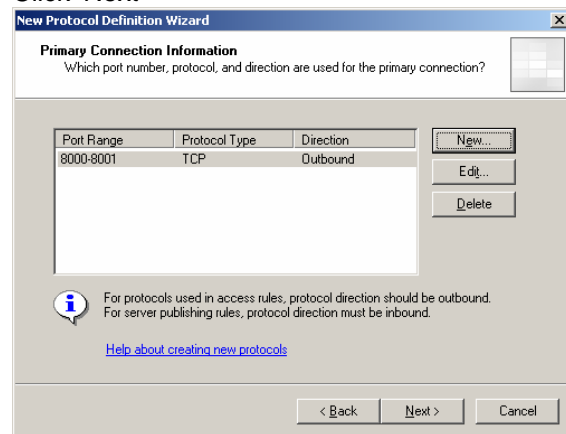
This had created the UDP rule required for Marratech to run on UDP 52000 – 52999.

Now for TCP 8000 – 8001:

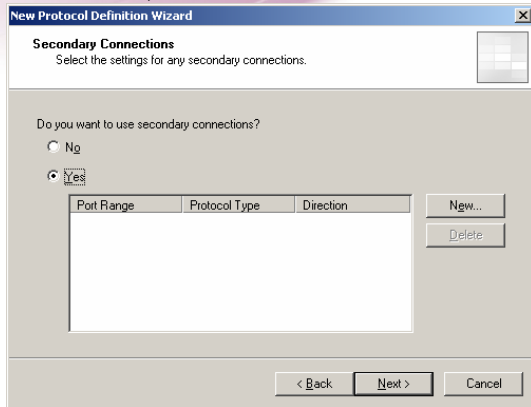
Repeat Step 1 – 7 and enter the below information:



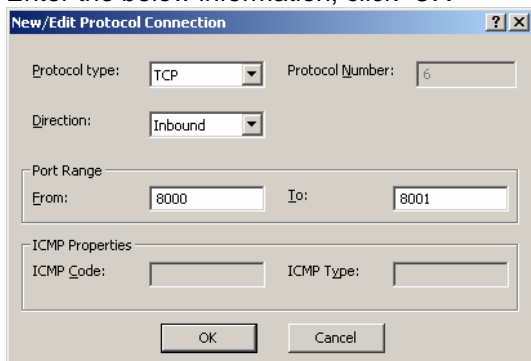
Click 'Next'



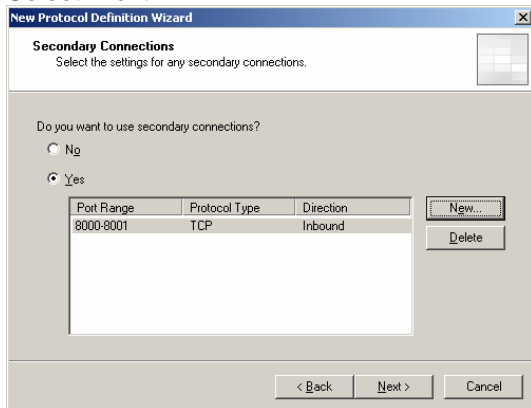
Select 'Yes', click 'Next'



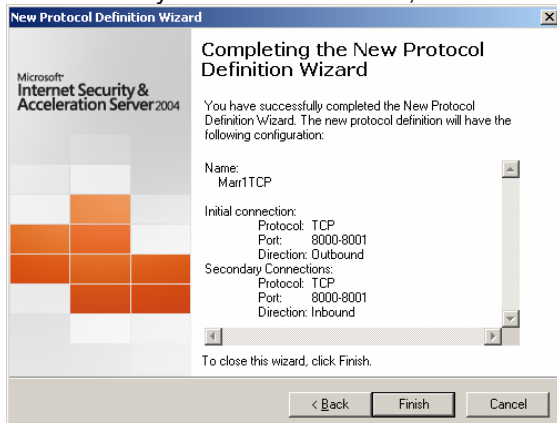
Enter the below information, click 'OK'



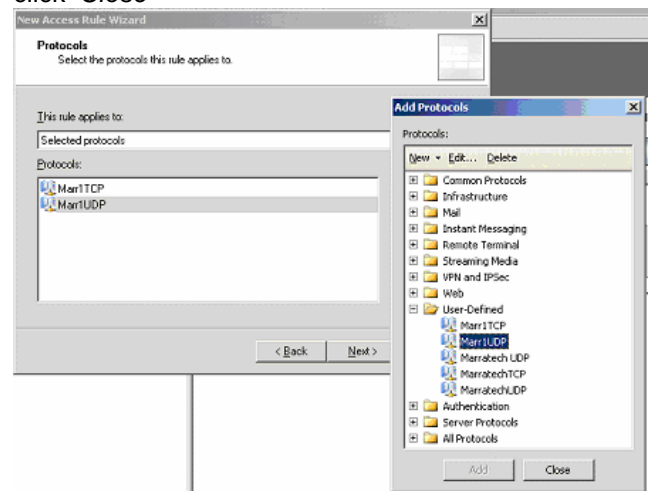
Select 'Next'



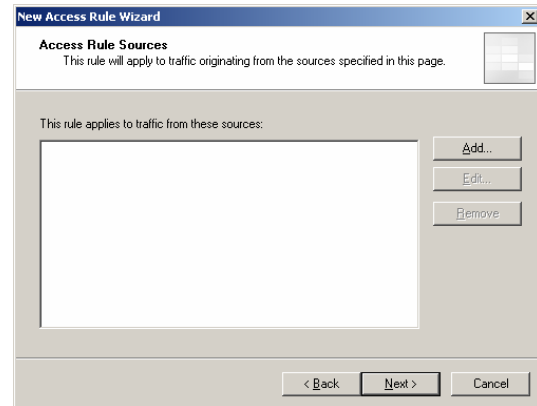
The summary should look like this, click 'Finish'



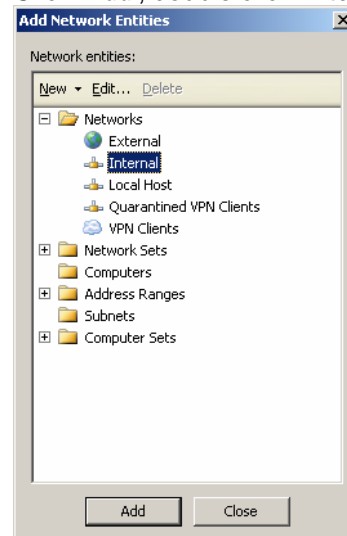
Under 'User-Defined' double click the protocols just created; they will appear in the left hand box, click 'Close'



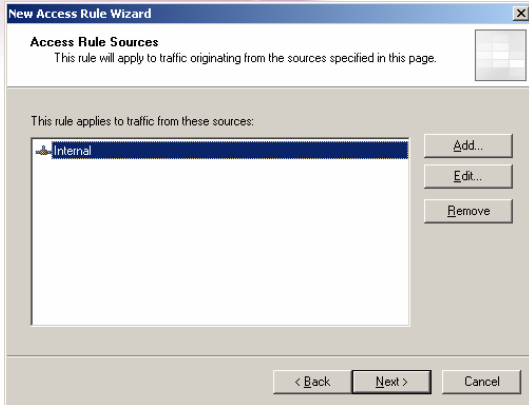
Click 'Next'



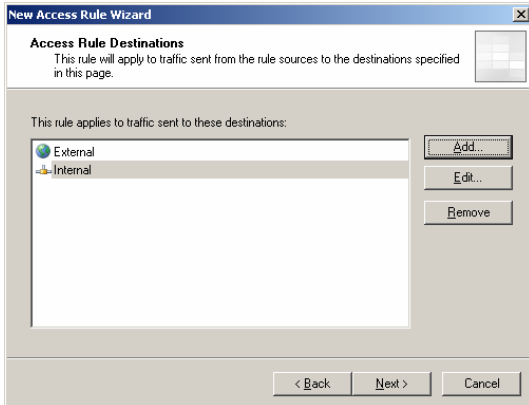
Click 'Add', double click 'Internal', click 'Close'



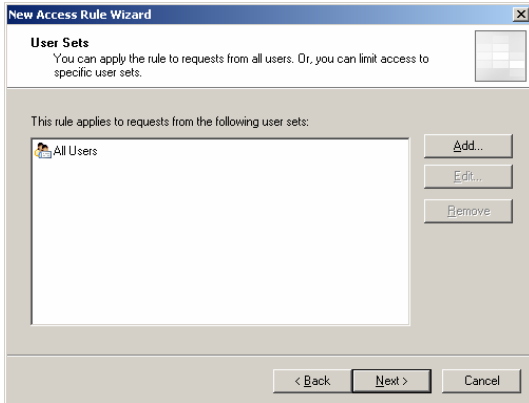
Click 'Next'



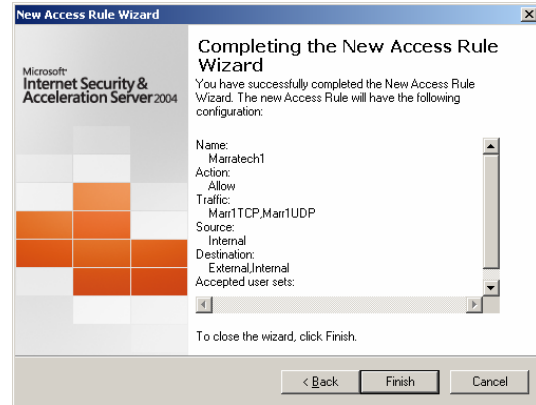
Click 'Add' and double click 'External' & 'Internal', click 'Close' and then 'Next'



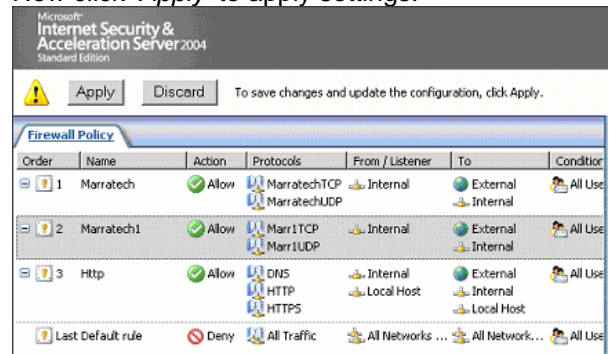
Click 'Next' which allows all users



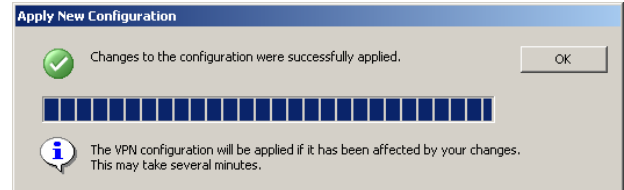
Your summary should read similar to this, click 'Finish'



Now click 'Apply' to apply settings.



Click 'OK'



Your rule should look like this:

Order	Name	Action	Protocols	From / Listener	To	Condition
1	Marratech1	Allow	Marr1TCP Marr1UDP	Internal	External Internal	All Users

